

Halving Challenge cards

c) What is half of 8?

d) What is half of 6?

c) What is half of 14?

d) What is half of 18?

Doubling and Halving



20. Rachel got 10 out of 10 on her test. Abi got half as much as Rachel. **How many did Abi get wrong?**



Doubling and Halving



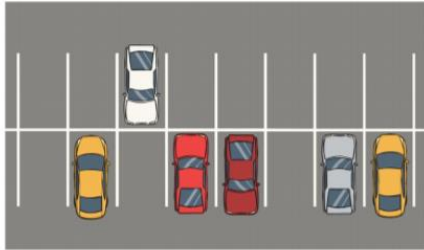
24. One ladybird has 12 spots. The second ladybird has half the number of spots of the first ladybird. **How many spots does the second ladybird have?**



Doubling and Halving



25. There were 6 cars in a car park. Half of them were driven home. **How many cars were left in the car park?**



Doubling and Halving



26. 8 children were playing a game of football. Half of them were wearing red shirts. **How many of them were wearing red shirts?**



Doubling and Halving



29. There were 10 caterpillars in the tree. Half of them became butterflies. **How many butterflies were there?**



Doubling and Halving



31. A bus was taking 20 children on a trip. Half of them were girls. **How many were boys?**



Doubling and Halving



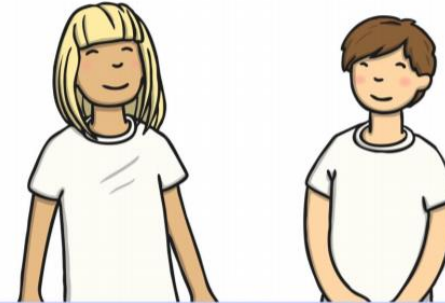
32. There were 14 candles on the cake. **Half of them were blown out. How many of them were still alight?**



Doubling and Halving



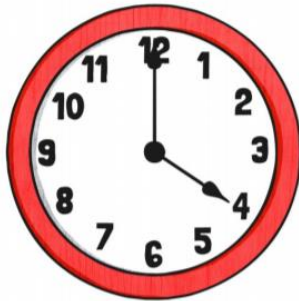
40. Ben is 12. Annie is half his age. **How old is Annie?**



Doubling and Halving



52. There are 24 hours in a day. **How many hours are in half a day?**



Doubling and Halving



53. There are 16 pots of paint on the shelf. Half of them are blue. **How many pots of paint are blue?**

