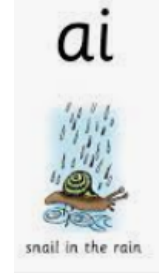


Year R Phonics Home Learning 4.1.21 - BLUE group

Some days, the task requires your child to apply the new sound they have learnt, other days they are consolidating the sounds learnt previously in school.

Tuesday

Today's new sound is **ai**. It is usually found in the middle of words and sometimes at the beginning.



Can you read these words (adding the sound buttons underneath if you need

them) and choose whether it's a real word



or an alien word



sail			
pain			
hain			
raim			
tail			
zaip			
rail			

Wednesday

Today's new sound is **Oi**. It is usually found in the middle of words and sometimes at the beginning.



Which picture contains each of the digraphs? Draw a line to match the digraph to the correct picture.

sh



ch



th



ng



qu



ai



## Thursday

Today's new sound is **or**. It is usually found in the middle of words or at the end, rarely at the beginning.



Shut the door

Can you write the initial (beginning) sound to go with each picture? Use the phoneme strip of letters to help you.



.....



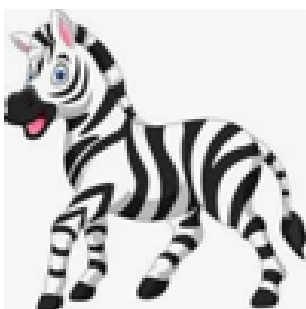
.....



.....



.....



.....

v

z

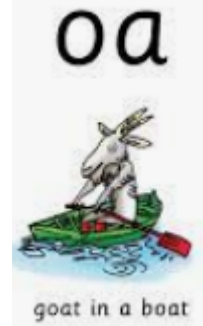
j

w

y

## Friday

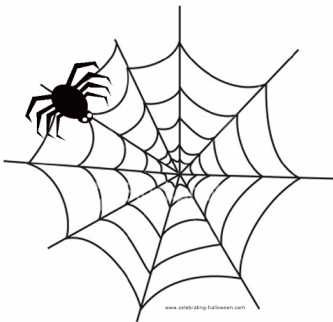
Today's new sound is **oa**. It is usually found in the middle of words and sometimes at the beginning.



Can you write the CVC words in the phoneme frame next to the picture? Use the phoneme strip to help you:



--	--	--



--	--	--



--	--	--

This week's new tricky word

was

You can watch a video here explaining what is tricky about the word - choose 'was'! : <https://www.reallygreatreading.com/heart-word-magic>

How many times can you find the word **was** below? Circle it every time!

was

ai

ch

was

was

sh

th

she

me

he

was